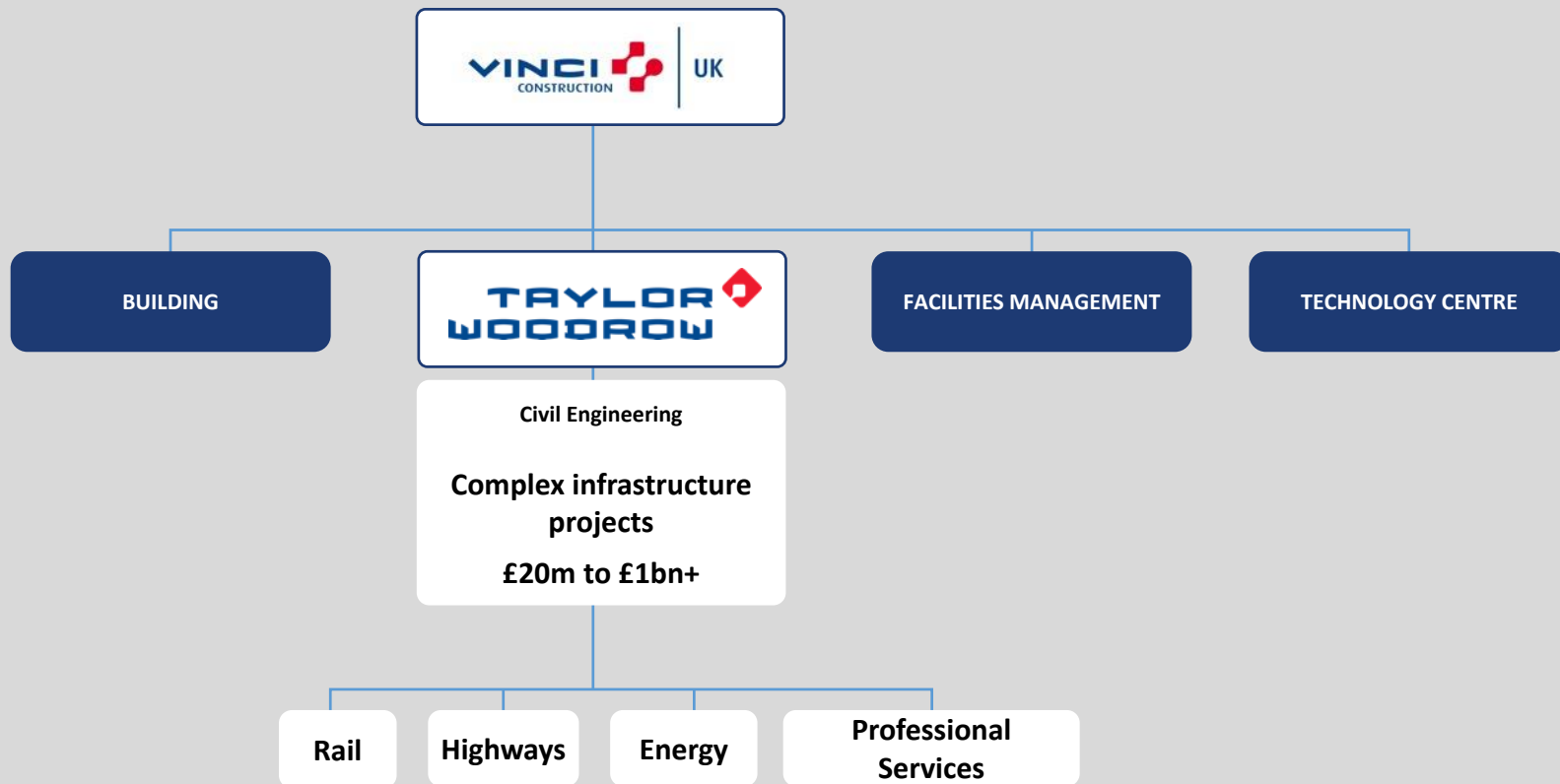


VINCI Construction UK



REAL
SUCCESS
IS THE
SUCCESS
YOU SHARE

Social Value in the UK

TAYLOR
WOODROW



EXCELLENCE
COLLABORATION
INNOVATION
INTEGRITY
DISCIPLINE

SHAW WOOD

REAL
SUCCESS
IS THE
SUCCESS
YOU SHARE

Social Value in the UK


TAYLOR
WOODROW

EXCELLENCE
COLLABORATION
INNOVATION
INTEGRITY
DISCIPLINE

SHEVA LTD




VINCI Construction UK Policies



UK

REAL
SUCCESS
IS THE
SUCCESS
YOU SHARE



SUSTAINABILITY POLICY

VINCI Construction UK Ltd is part of the VINCI SA Group, a world leader in concessions, construction, facilities and associated services. VINCI Construction UK Ltd delivers a comprehensive service from project inception through design, manufacturing and construction to operation and maintenance. The scope of this policy covers all UK operations.


We strive to deliver sustainable solutions guided by our values and with our 'together' manifesto we engage with our teams, customers and supply chain for the benefit of those stakeholders in the wider community and environment in which we work and live.

It is important to us to emphasize the social, economic and environmental impact of our business in everything we do, and this policy reflects our commitment to ensuring that sustainability is considered through all our business decisions.

A framework of supplementary subject-lead policies* and codes embed sustainability in our business. Below are some of the overarching sustainability objectives of VINCI Construction UK Ltd:

- Offer career development, supporting our teams to be diverse, engaged, motivated and competent - together working towards the sustainable success of our business.
- Engage positively with civic projects and the local communities in which we work, both through specific project engagement and through company-wide initiatives.
- Deliver sustainable profitable growth while satisfying our ethical, legal and contractual obligations.
- Improve resource efficiency, sustainable consumption, and production, throughout the whole supply chain from design through to operation.
- Encourage ideas and innovation, internally and with our supply chain, that can create financial savings and benefit our customers, society and environment.
- Actively promote sustainability in our industry through the industry associations, partnerships and organisations we support, including Build UK and the Supply Chain Sustainability School.
- Demand sector-leading Health, Safety, Environmental and Quality performance from our own teams and our subcontractors.
- Integrate our sustainability goals throughout our operations.
- Commit to measuring our impact through Health, Safety, Environmental and Quality performance data, employee engagement surveys, customer satisfaction feedback and our financial performance.

This policy will be reviewed annually, and be adapted if changes to the company occur.


 Bruno Dupuy
 Chief Executive
 VINCI Construction UK Ltd

* Please see our Supply Chain and Procurement Policy, Commitment to the Community Policy, Environmental Policy and H&S policies and internal standards.

A111-001-ENN-FD-0000-0000 January 2020

- Health, Safety and Wellbeing
- Supply Chain and Procurement
- Collaborative Business Relationships
- Community
- Energy
- Environment
- Green Office
- Sustainability
- Sustainable Travel
- Equal Opportunities
- Fairness, Inclusion and Respect
- Human Rights
- Modern Slavery and Human Trafficking
- Recruitment and Selection

PUBLIC SERVICES (SOCIAL VALUE) ACT 2012

Well-being of Future Generations (Wales) Act 2015

- Legislation
 - Public Services (social Value) Act 2012
 - Well-being of Future Generations Act 2015
 - Planning Acts e.g. Crossrail 2008, High Speed Rail 2017
- Competitive edge – contract requirement
- Community support
- Innovation



Taylor Woodrow attend local careers fair

- Varied approach to social value and sustainability
- Open requirements improve communication and innovation between client and contractor
- Best value:
 - Economy: spending less
 - Efficiency: spending well
 - Effectiveness: spending wisely
- Challenges:
 - No common measurement tool
 - Varied levels of reporting

Social Value – Project Delivery



Taylor Woodrow Supply Chain Award 2018 at the ICE

- Community engagement as standard in Taylor Woodrow
- Engaging supply chain to support requirements
- Common social value requirements in contracts:
 - Employment: Apprentices, graduates, unemployed, women, equal opportunities
 - Local supply chain
 - School engagement
 - Community Volunteering

Social Value – Legacy

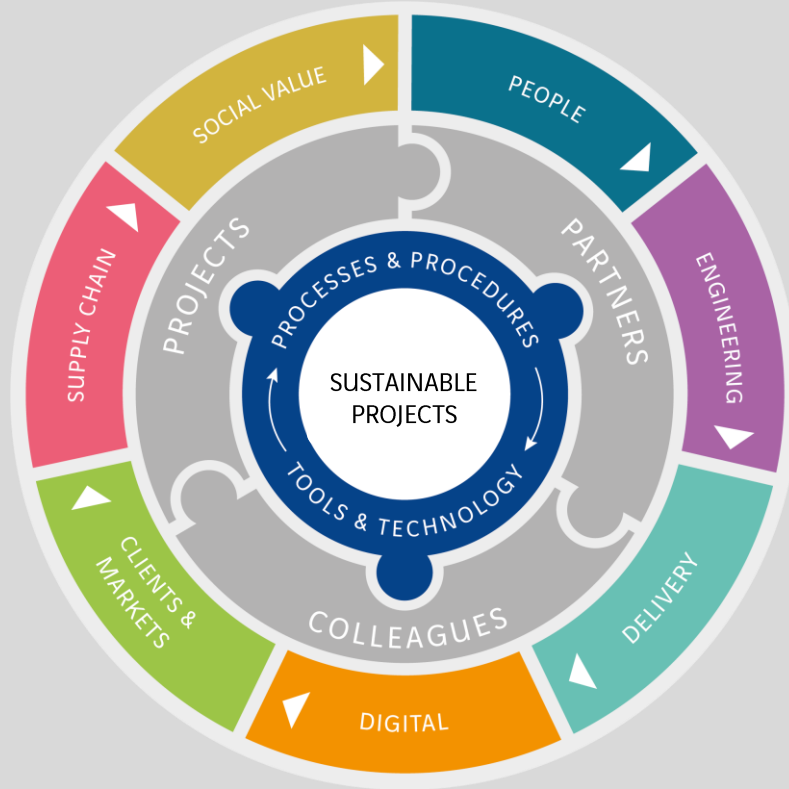


*Award winning
apprentices*



- Long term impact
- Social value – what will continue to be of value after work is complete
- Investment in people and local business will have lasting positive impacts past the project lifecycle

Changes in Taylor Woodrow



Create a tangible positive legacy
for communities, environment and
future generations.

Local Expertise

Community legacy

Carbon

Biodiversity

Case Study: Crossrail West Stations



Contract Value: £145M

Project Duration: 2013 - 2018

Social Value requirements: Crossrail Act 2008 & Specific contract requirements

Social Value delivery:

- Various volunteering
- School engagement through presentations
- Hosting schools on site
- Influencing over 900 students
- Raising £35,000

Case Study: Crossrail West Stations



Engineering Education Scheme:

- Real engineering project 'To assess and improve Southall Station's BREEAM (environmental assessment) rating within a £100,000 budget'
- Weekly mentoring from 5 contractor and client volunteers
- Successful outcome – sustainability inspiration, real experience

